

Giant Proximal LAD Aneurysm

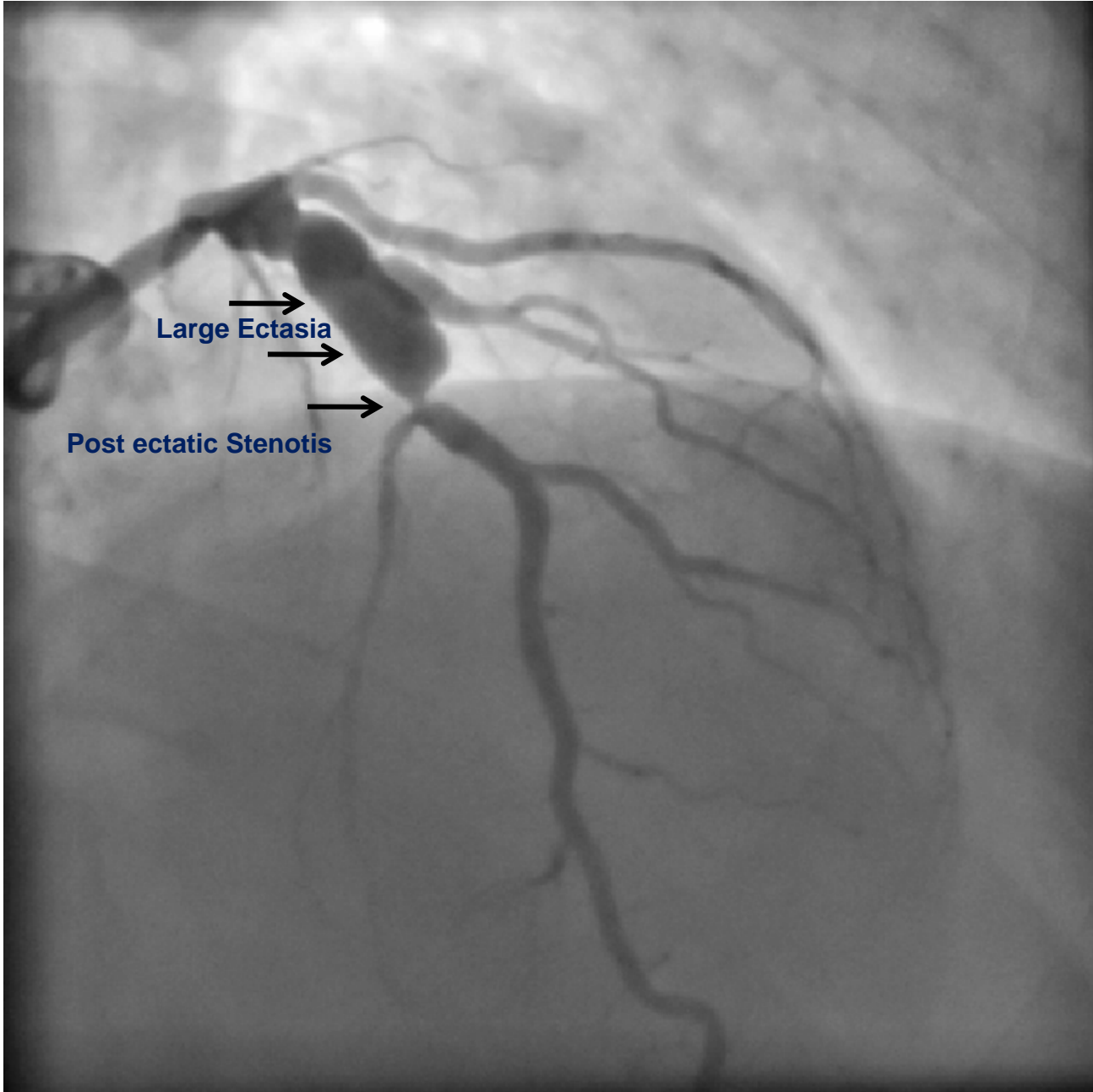
Prof. Ran Kornowski
Hana Vaknin-Assa MD

Rabin Medical Center



Proximal LAD – Giant Aneurysm

- L.I. 55 year old male
- Dyslipidemia, positive Family Hx, Former smoker
- Effort Angina
- Coronary Cath: Single CAD, Proximal LAD ectasia and post stentic dilatation



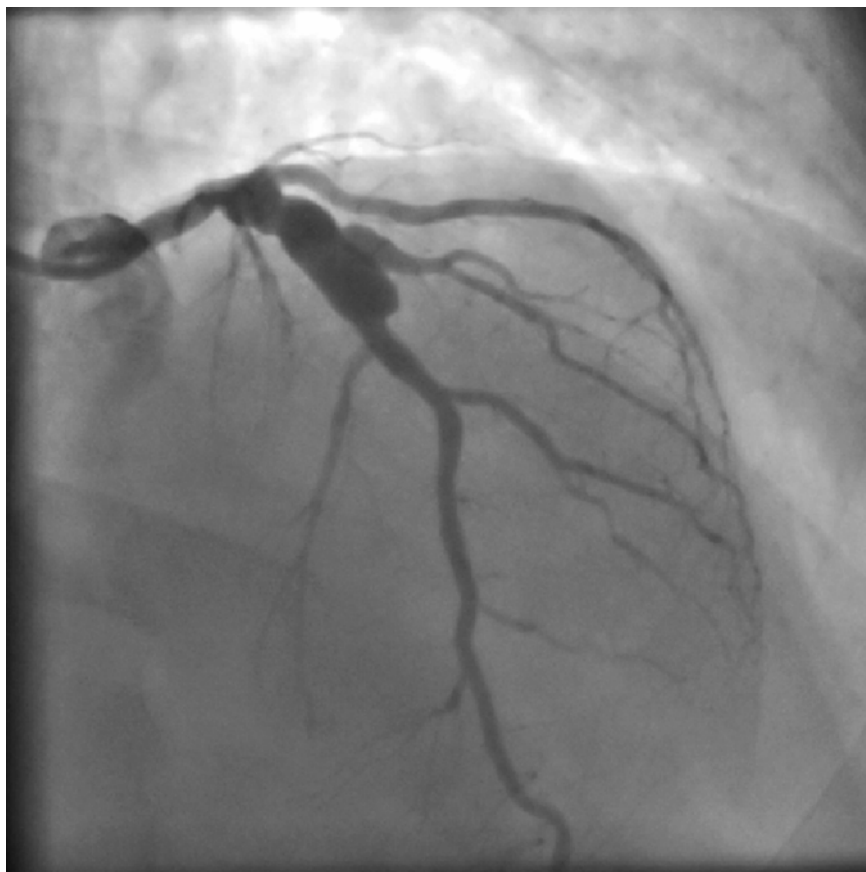
Large Ectasia

Post ectatic Stenosis

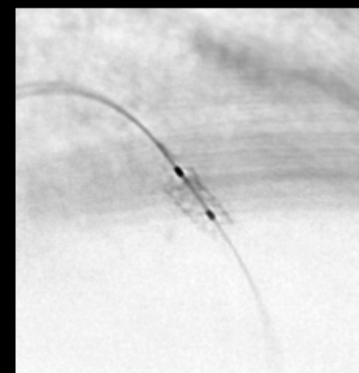
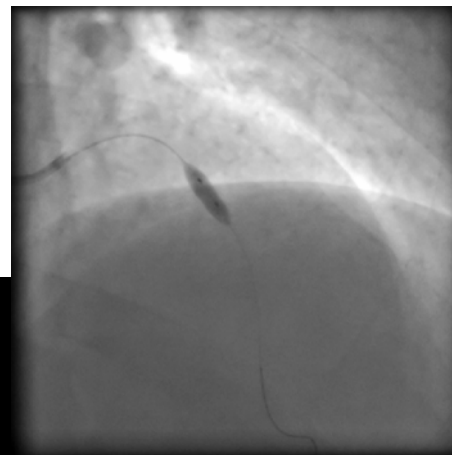
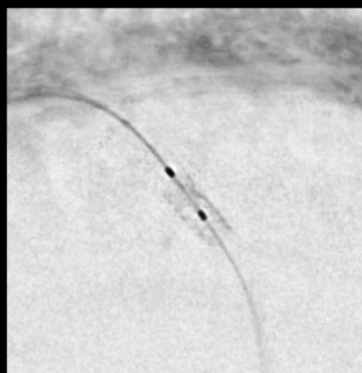
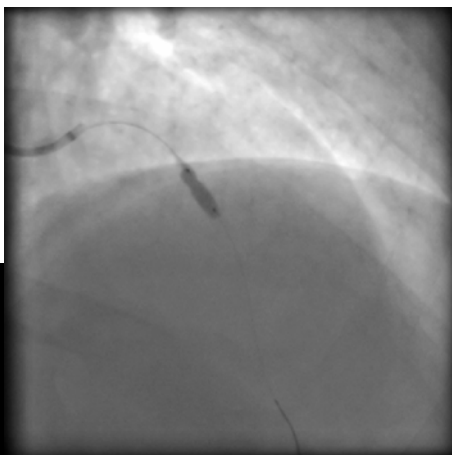
Treatment Modalities

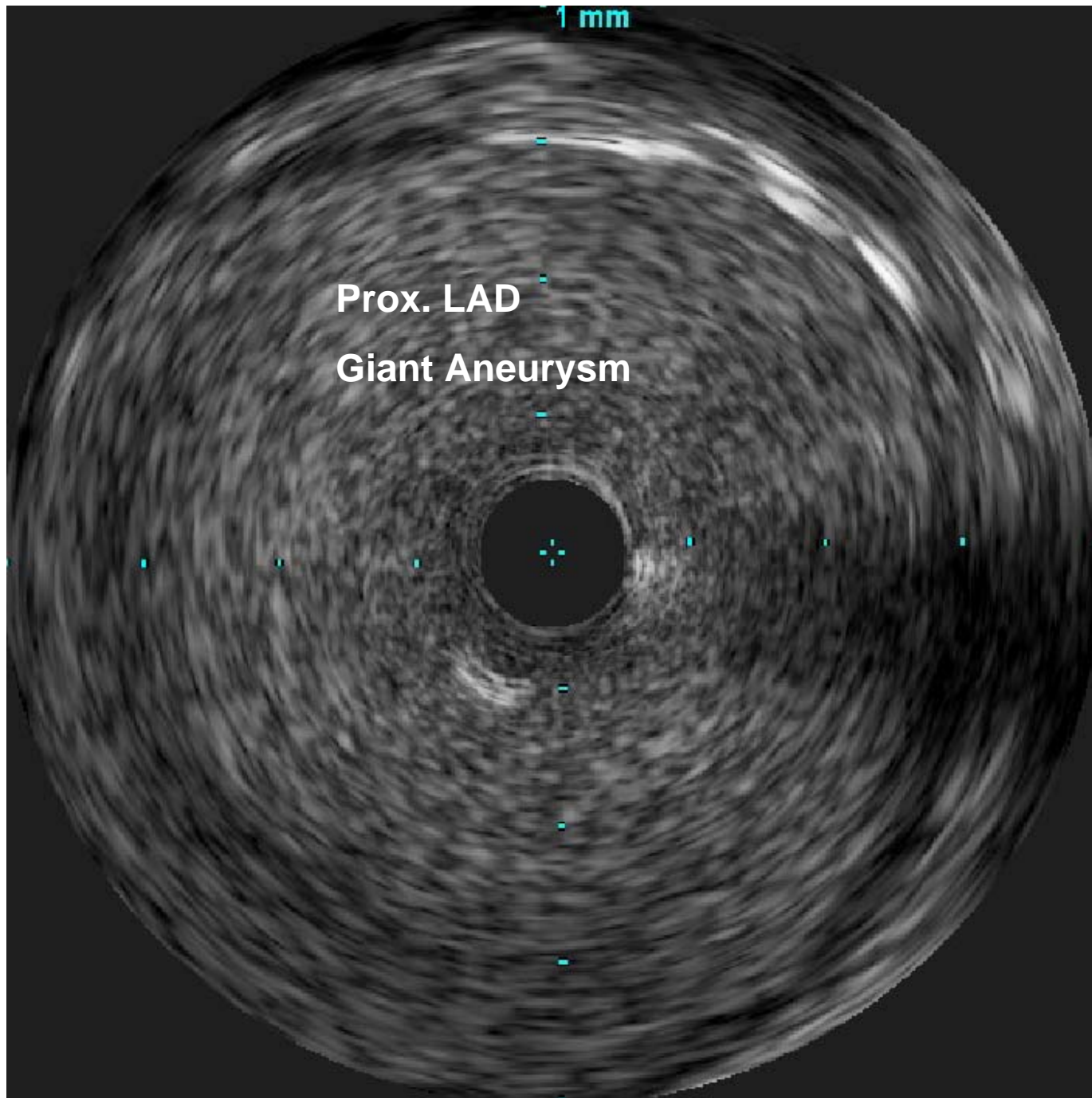
- PCI of LAD
 - BSM or DES?
 - IVUS Guided PCI
- LIMA to LAD?
- Anti-thrombotic management

Direct Stenting of Mid LAD using BMS



Final Result controlled by 'STENTOP' stent imaging software

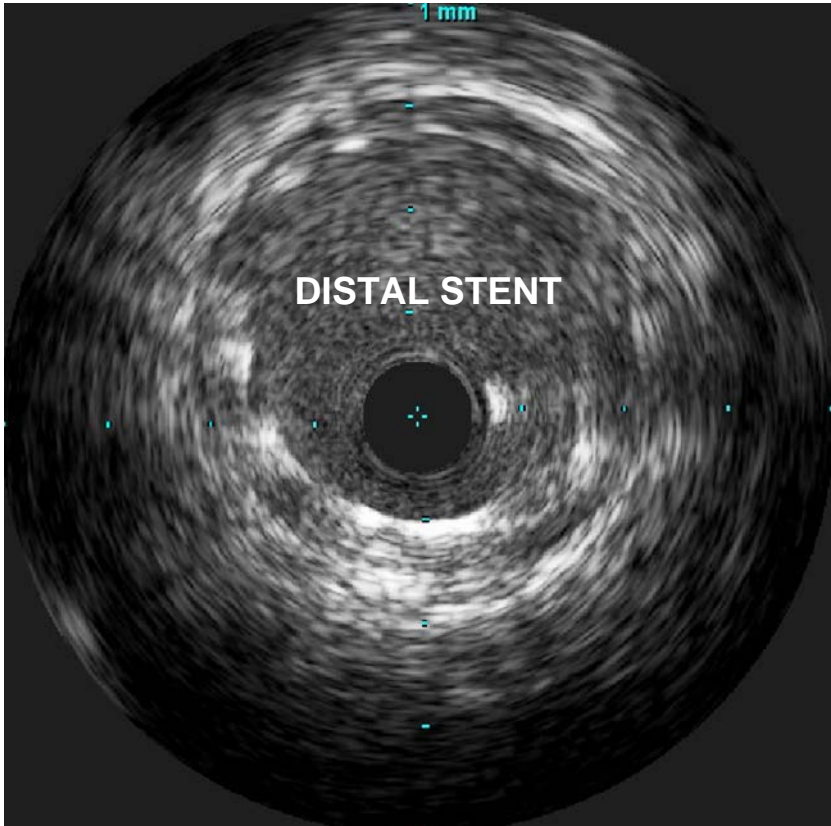
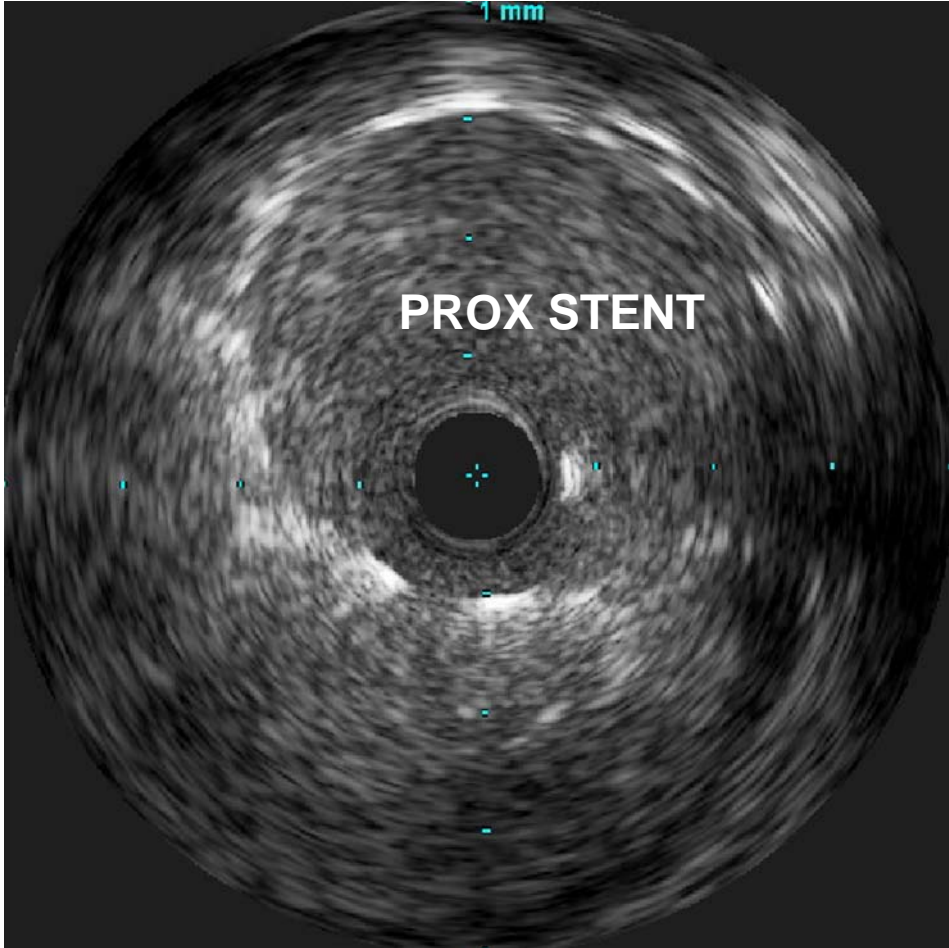




1 mm

Prox. LAD
Giant Aneurysm

....And by IVUS



Post procedure management

- Clopidogrel for one year @75 mg per day
- Angiographic Follow Up ?
- Platelet function studies – normal response to ASA 100 mg and clopidogrel 75 mg daily